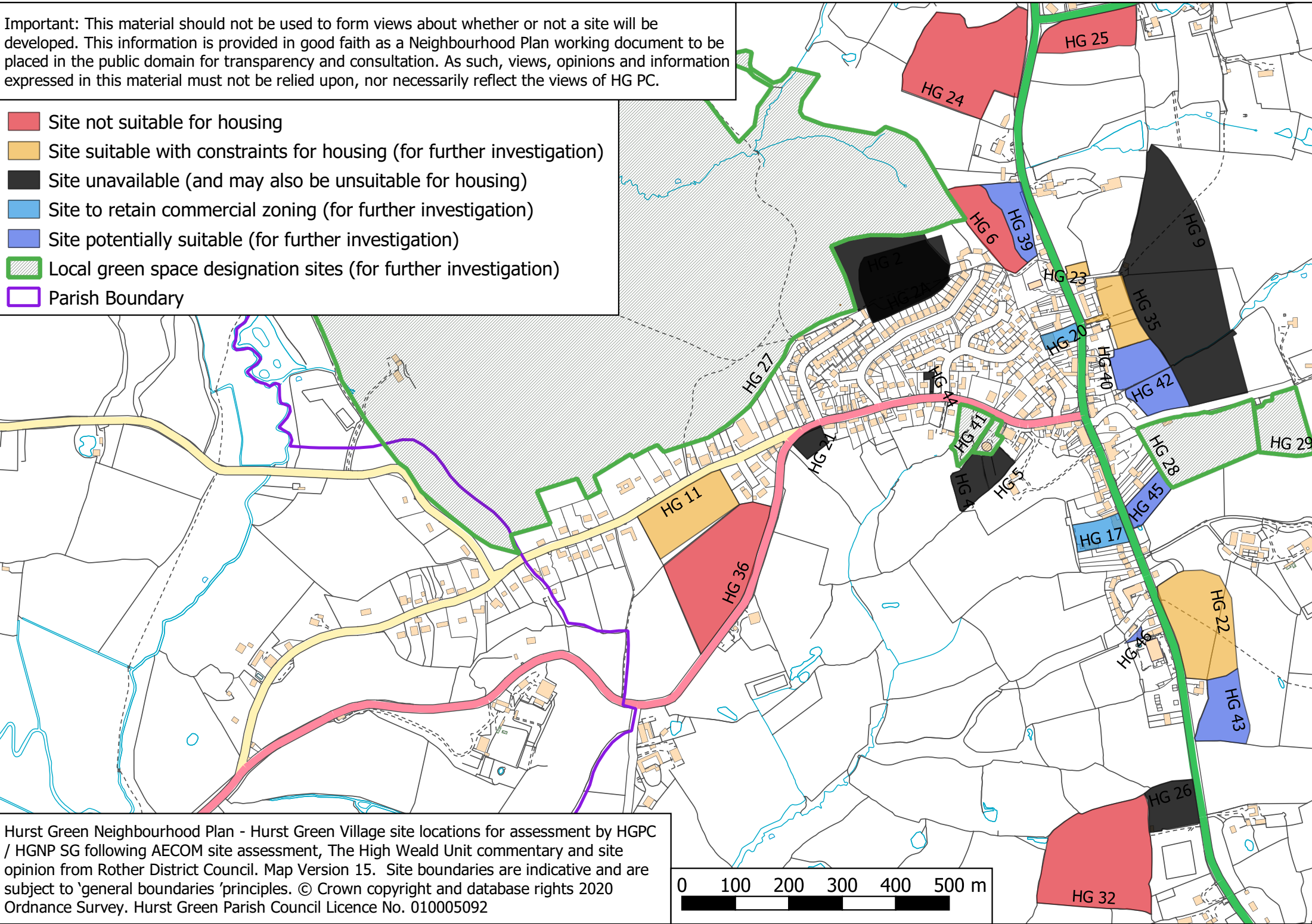


Important: This material should not be used to form views about whether or not a site will be developed. This information is provided in good faith as a Neighbourhood Plan working document to be placed in the public domain for transparency and consultation. As such, views, opinions and information expressed in this material must not be relied upon, nor necessarily reflect the views of HG PC.

- Site not suitable for housing
- Site suitable with constraints for housing (for further investigation)
- Site unavailable (and may also be unsuitable for housing)
- Site to retain commercial zoning (for further investigation)
- Site potentially suitable (for further investigation)
- Local green space designation sites (for further investigation)
- Parish Boundary



Hurst Green Neighbourhood Plan - Hurst Green Village site locations for assessment by HGPC / HGNP SG following AECOM site assessment, The High Weald Unit commentary and site opinion from Rother District Council. Map Version 15. Site boundaries are indicative and are subject to 'general boundaries' principles. © Crown copyright and database rights 2020 Ordnance Survey. Hurst Green Parish Council Licence No. 010005092

