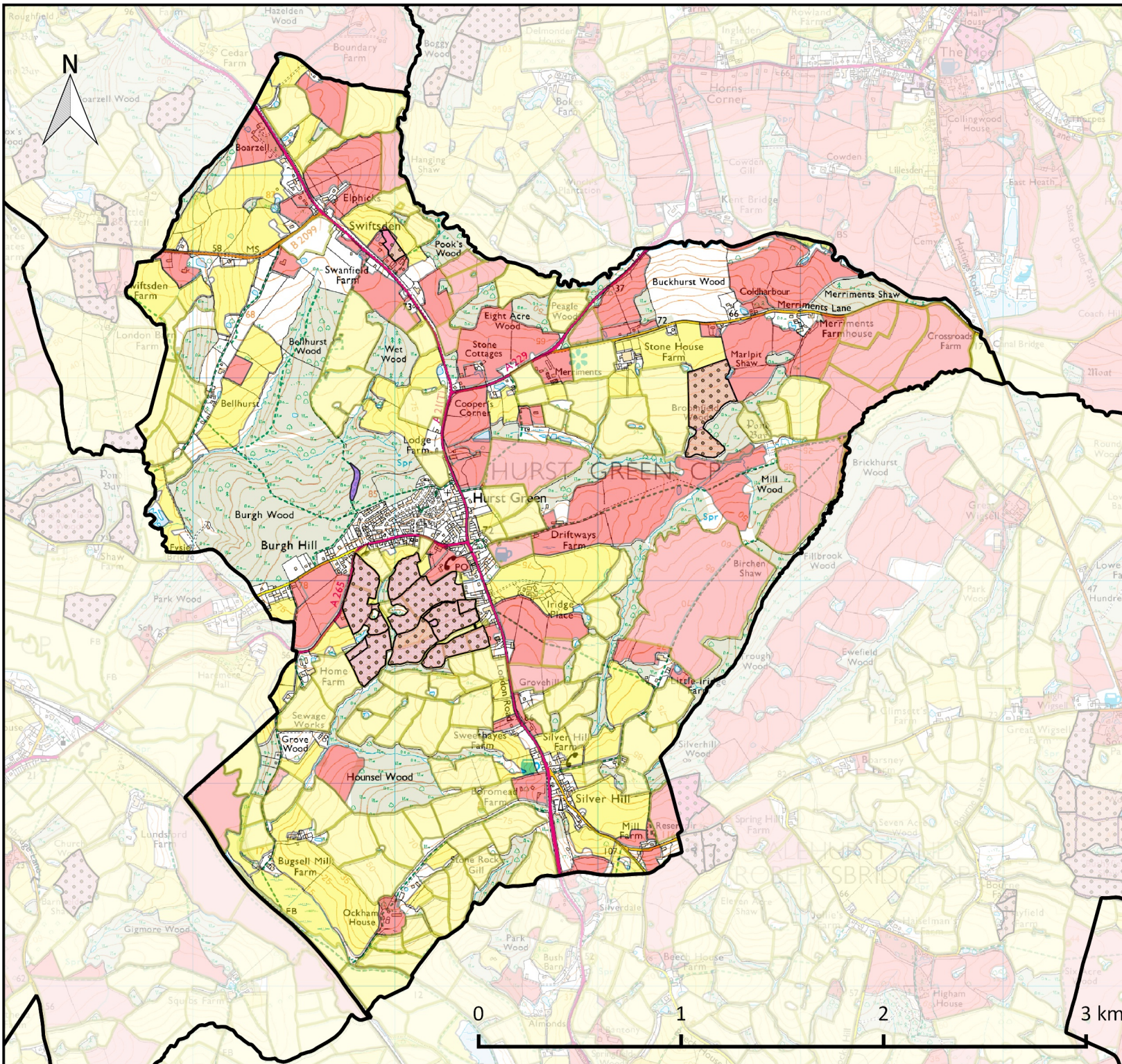


High Weald AONB
 Character Components
Field & Heath
Hurst Green Parish



Key

- High Weald AONB Boundary
- Parish Boundaries
- Heathland
- Known Wildflower Meadows
- Historic Field Boundaries
- Medieval Field Systems
- Other Field Systems

Summary Character Description:
 The High Weald AONB is characterised by small, irregularly shaped and productive fields often bounded by (and forming a mosaic with) hedgerows and small woodlands, and typically used for livestock grazing; small holdings; and a non-dominant agriculture; within which can be found distinctive zones of heaths and inned river valleys.

NB: Other field systems are likely to contain medieval and earlier features. All information is provisional. Data has been collected for strategic purposes and individual site based assessments are recommended.

- Management Plan Objectives**
- FH1 Objective: To secure agriculturally productive use for the fields of the High Weald, especially for local markets, as part of sustainable land management.*
 - FH2 Objective: To maintain the pattern of small irregularly shaped fields bounded by hedgerows and woodland.*
 - FH3 Objective: To enhance the ecological function of field and heath as part of the complex mosaic of High Weald habitats.*
 - FH4 Objective: To protect the archaeology and historic assets of field and heath.*

For further info please refer to the High Weald AONB Management Plan, which may be downloaded from our website (see address below).

Researched and produced by the High Weald AONB Unit

T: 01424 723011
 E: info@highweald.org
 W: www.highweald.org

Created on: 2018-06-29
 © Crown copyright. All rights reserved 100019238.

